

Personal, Social and Emotional

Talk about what makes someone a good friend. How am I unique
What makes me happy or sad? Likes/dislikes.
Explore different emotions through stories and songs
RE - what makes me special? Who helps and guides us? Who is special to me?
Learn about the meaning of Harvest Festival.

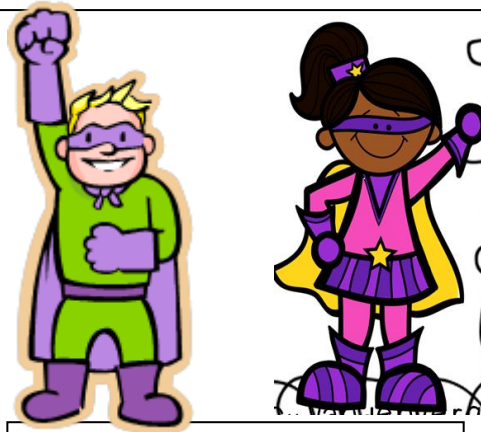
Communication and Language / Literacy

Phonics - Phase 1 speaking and listening games. Introduce 'sound talking' to segment and blend words. Play with words and sounds using rhyme and alliteration.
Listen and respond to a range of picture books.
Practise mark-making both inside and outside using various materials.

Mathematical Development

Use everyday contexts to develop understanding of number i.e. pretend baking, money, measuring and making models and pictures using shapes.
Explore Numicon for the first time.
Use a range of resources to count with.
Recognising numerals and placing in order.
Recognising 2d shapes.

'Respect 4 All' Foundation Stage



Inspire Days

Welly walk to local area.

Environmental studies in Mike's Meadow

Parent Info/support

16th October at 5.00pm
Phonic workshop for parents in preparation for the teaching and learning of Jolly Phonics in term 2.

Understanding the World

Talk about our families and create a family portraits. Distinguish between past and present - how have we changed since being a baby.
Explore the different parts of our body.
Use our senses to explore the world around us. Use a 'Digital viewer' to look at different textures and materials up close.

Expressive Arts and Design

Create self-portraits using a variety of media, including collage, paint and pastels.
Mood paintings in response to music.
Funny Bones - skeleton collages.
Ephemeral art using the artists Richard Long and Andrew Goldsworthy. Create natural sculptures and art.

Physical Development

Use malleable materials in their play.
Play simple listen and command games.
Use the parachute to play co-operation games.
Develop an awareness of the space and others in the hall. Learn routines and safety rules.
Practise locomotive movements such as hopping, skipping, running and jumping.

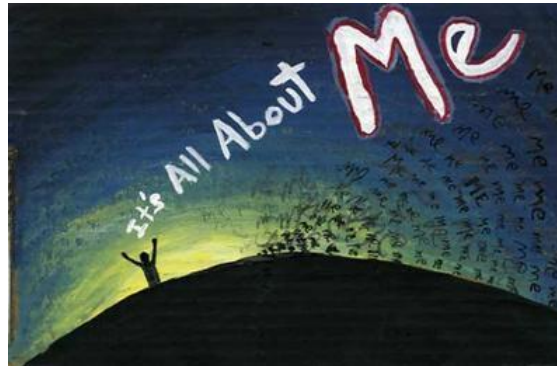
Outdoor Environment

Autumn welly walk with our special friends.

Autumn sculptures using the influence of the artists Andrew Goldsworthy and Richard Long.

Being a builder! Using wheeled toys and dressing up clothes.

Building structures using wooden bricks.
Mark-making using chalks and water.



Eco - Respect for our environment

Superhero - Michael Recycle saves the world. Environmental studies with Jackie in Mike's Meadow.

Role-play area

Home corner - pretend play at home - cooking, keeping house play Mums/Dads.

Fruit and Veg shop - Set up equipment needed, make signs. Use money in our play. Be a shop keeper.

Key Learning Skills

Communication skills - talk with lots of different people. Talk with friends in a group.

Social/Empathy - play and work with others, take turns and share.

Creative thinking - Find out about materials and resources by exploring them.

Grand Finale

During the final week of term there will be an open classroom session for parents.

Equalities

Being part of a larger group.

Sharing with each other, learning to share the toys and books.

Work in small groups or with a partner.

Children's Questions / suggestions

We want to...

Play with the water and boats.

Go to Mike's Meadow

Play superheroes

Build tracks!

Children's interests (gathered from treasure boxes)

Superheroes

Cars and trains

Animals

Dinosaurs